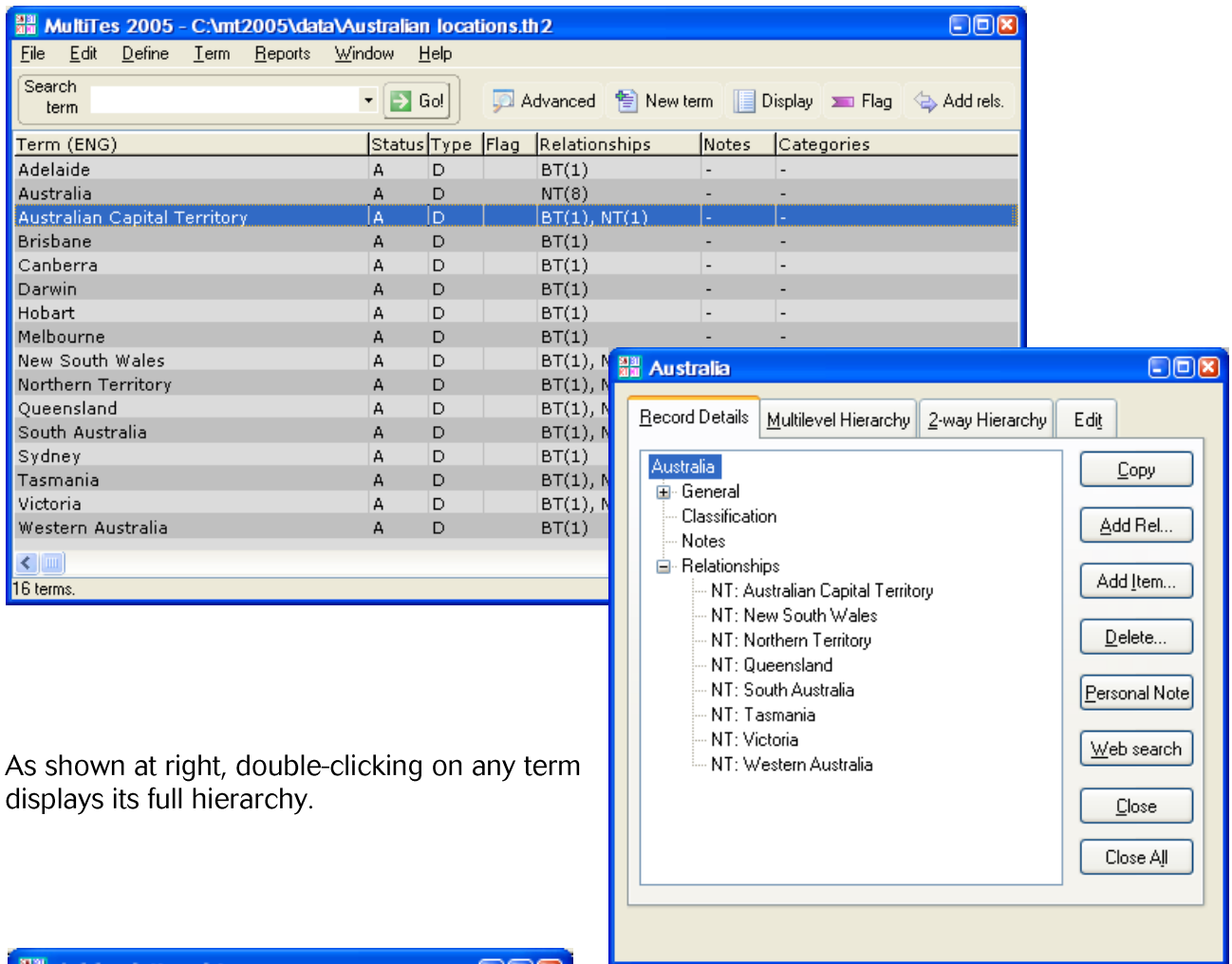


MultiTes Pro *Thesaurus Building Made Simple*

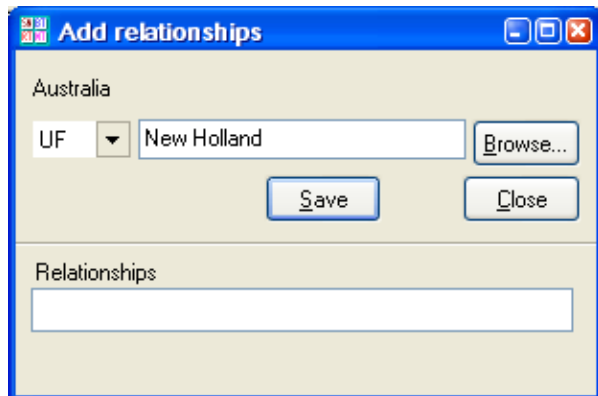
Using MultiTes Pro it is very easy to set up and maintain an electronic thesaurus, with full authority control and standard hierarchical entries. You can even define your own relationships and use numerical codes.

If your thesaurus or subject heading list already exists in electronic form, you can import it directly into MultiTes Pro. So, for example, if you have created your thesaurus in Inmagic DB/TextWorks or CS/TextWorks, you can use a simple report form to export the records and load them into MultiTes Pro. Of course, you can also create and edit entries directly in MultiTes Pro.

Users can browse the thesaurus for terms:



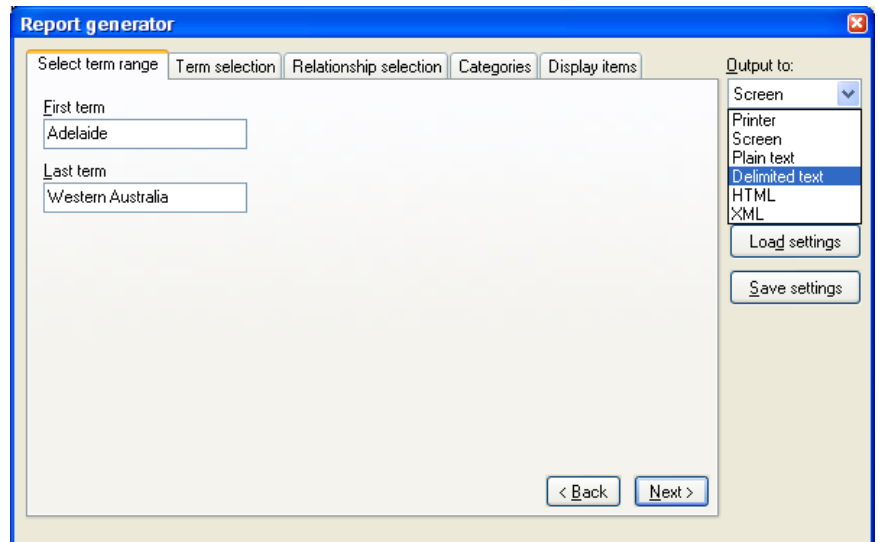
As shown at right, double-clicking on any term displays its full hierarchy.



When you edit a term or add new relationships, any terms referenced are automatically updated. You never need to spend time checking your thesaurus!



When your thesaurus is complete, MultiTes Pro offers a number of output methods including formatted printouts (of all relationships or of selected relationships), HTML files for Internet/intranet accessibility and Delimited text format for transfer to a variety of software products including DB/TextWorks or CS/TextWorks.



New features of MultiTes Pro:

- Totally re-designed visual interface
- 32-bit architecture (suited to XP)
- New Quick Data Entry: fast, free-text mode
- Context sensitive menus
- Enhanced HTML outputs
- Improved thesaurus handling: open multiple thesauri at once
- Advanced search feature

Longstanding MultiTes features:

- Automatic generation of reciprocal relationships
- Support for both monolingual and multilingual thesauri
- Support for polyhierarchical thesauri (multiple BTs)
- Up to 100 million terms per thesaurus
- Import Module allows you to import your thesauri into MultiTes 2005 Pro without re-keying
- Alphabetical, Hierarchical, Top Term, Classified and Rotated reports
- Quick search of strings and classification codes
- Report Generator
- HTML File Generator

System Requirements:

- IBM-PC or compatible (Pentium or above recommended)
- Recommended memory for your system
- 2MB of disk space for application files
- 15 MB (approx) of disk space for each 50,000 terms
- Windows NT/2000/XP or better

Extend the use of your thesaurus even further: add the new **MultiTes Web Deployment Kit** to your Web/intranet site and give users access to the thesaurus through their Internet browser (e.g. Internet Explorer), with the added capability of searching an Inmagic database or a Web search engine for any term selected!

