



Maxus Australia presents  
MultiTes 2005 Pro &  
Web Deployment Kit

... thesaurus construction  
and management made  
even easier!

MAXUS

# MultiTes 2005 Pro

- New and improved interface
- Great added features

MAXUS

Search term

Term	Relationships	Notes	Categories
One way street	BT, RT	-	-
<i>Open graded mix</i>	USE	-	-
Operating costs	BT, RT	-	-
Operating speed	BT, RT	-	-
<i>Ophite</i>	USE	-	-
<i>Opinion</i>	USE	-	-
Optical disk storage	BT, NT, UF	-	-
Optics	NT, RT	-	-
Origin destination traffic	BT, RT, UF	-	-
Orthotropic plate	BT, RT	-	-
<i>Oscillation</i>	USE	-	-
<i>Outbound traffic</i>	USE	-	-
<i>Output</i>	USE	-	-
<i>Outskirts</i>	USE	-	-
Overdimensional vehicle	BT, RT, UF	-	-
<i>Overhead</i>	USE	-	-
Overhead traffic sign	BT, UF	-	-
<i>Overhead traffic signal</i>	USE	-	-
Overlay	BT, RT	-	-
Overloaded vehicle	BT, RT, UF	-	-
<i>Overpass</i>	USE	-	-
Overtaking	BT, RT	-	-
Overturning	BT, RT, UF	-	-
Oxidation	BT	-	-
Ozone	-	-	-
Paint	RT, UF	-	-
<i>Panel van</i>	USE	-	-
Parapet	BT, RT	-	-
Paratransit	BT, NT, RT	-	-

Typical thesaurus display in MultiTes 2005 Pro

Fonts, colours and columns can be customised to your preferences

MultiTes 2005 Pro - C:\mt2005\data\ATRI2005.th2

File Edit Define Term Reports Window Help

Search term  Go! Advanced New term Display Flag Add rels.

Term	Relationships	Notes	Categories
One way street	BT, RT	-	-
Open graded mix	USE	-	-
Operating costs	BT, RT	-	-
Operating speed			
Ophite			
Opinion			
Optical disk storage			
Optics			
Origin destination traffic			
Orthotropic plate			
Oscillation			
Outbound traffic			
Output			
<b>Outskirts</b>			
Overdimensional vehicle			
Overhead			
Overhead traffic sign			
Overhead traffic signal			
Overlay			
Overloaded vehicle			
Overpass			
Overtaking			
Overturning			
Oxidation	BT	-	-
Ozone	-	-	-
Paint	RT, UF	-	-
Panel van	USE	-	-
Parapet	BT, RT	-	-
Paratransit	BT, NT, RT	-	-

**Outskirts**

Record Details Multilevel Hierarchy 2-way Hierarchy Edit

- Outskirts
  - General
  - Classification
  - Notes
  - Relationships
    - USE: Suburbs

Copy  
Add Rel...  
Add Item...  
Delete...  
Personal Note  
Web search  
Close  
Close All

**Double click on a term to see its relationships**

Search term

Term	Relationships	Notes	Categories
One way street	BT, RT	-	-
Open graded mix	USE	-	-
Operating costs	BT, RT	-	-
Operating speed			
Ophite			
Opinion			
Optical disk storage			
Optics			
Origin destination traffic			
Orthotropic plate			
Oscillation			
Outbound traffic			
Output			
Outskirts			
Overdimensional vehicle			
Overhead			
Overhead traffic sign			
Overhead traffic signal			
Overlay			
Overloaded vehicle			
Overpass			
Overtaking			
Overturning			
Oxidation			
Ozone			
Paint	RT, UF	-	-
Panel van	USE	-	-
Parapet	BT, RT	-	-
Paratransit	BT, NT, RT	-	-

**Outskirts**

Record Details | Multilevel Hierarchy | 2-way Hierarchy | Edit

- Outskirts
  - General
  - Classification
  - Notes
  - Relationships
    - USE: Suburbs

**Add relationships**

Outskirts

UF

Relationships

Click to add new relationships

MultiTes 2005 Pro - C:\mt2005\data\ATRI2005.th2

File Edit Define Term Reports Window Help

Search term  Go  Advanced

Term	Relationships	Notes	Categories
One way street	BT, RT	-	-
Open graded mix	USE	-	-
Operating costs	BT, RT	-	-
Operating speed			
Ophite			
Opinion			
Optical disk storage			
Optics			
Origin destination traffic			
Orthotropic plate			
Oscillation			
Outbound traffic			
Output			
Outskirts			
Overdimensional vehicle			
Overhead			
Overhead traffic sign			
Overhead traffic signal			
Overlay			
Overloaded vehicle			
Overpass			
Overtaking			
Overturning			
Oxidation			
Ozone			
Paint	RT		
Panel van	US		
Parapet	BT, RT		
Paratransit	BT, NT, RT		

Outskirts

Record Details Multilevel Hierarchy 2-way Hierarchy Edit

Outskirts

- General
- Classification
- Notes
- Relationships
  - USE: Suburbs

Copy  
Add Rel...  
Add Item...  
Delete...  
Personal Note  
Web search  
Close  
Close All

Add relationships

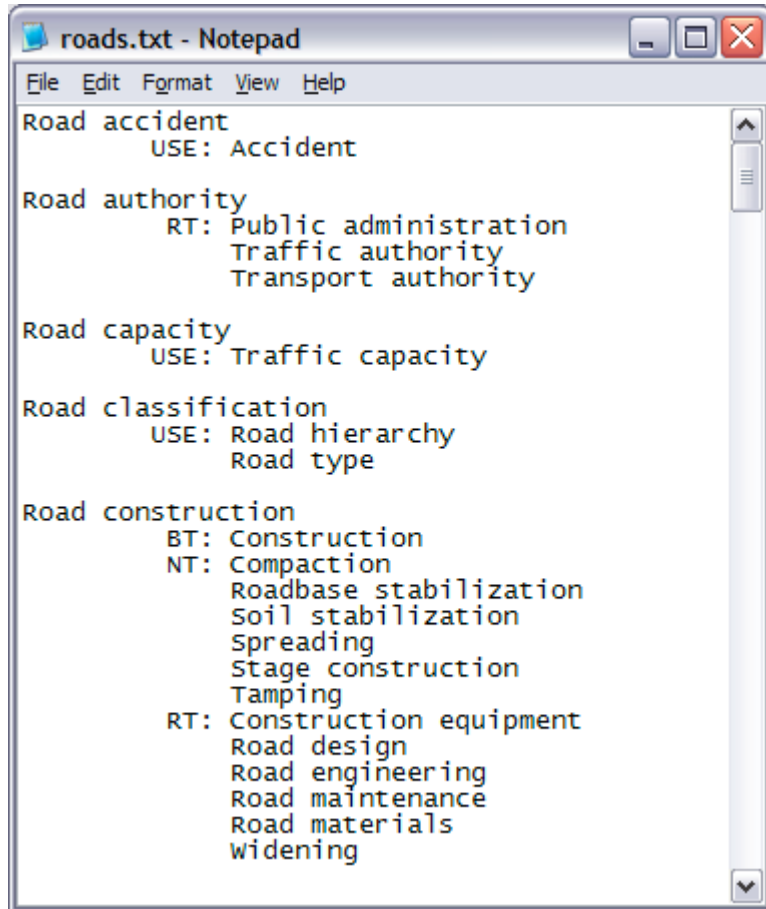
Outskirts

UF  Browse...

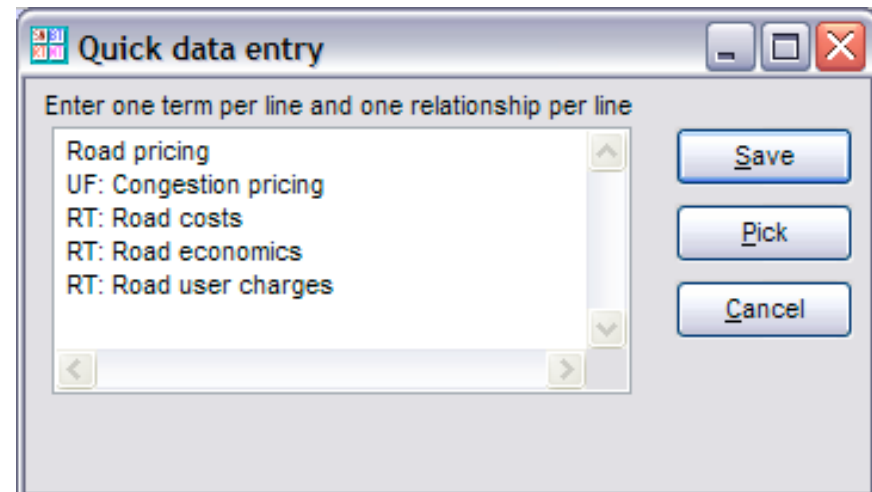
UF  
USE  
BT  
NT  
RT

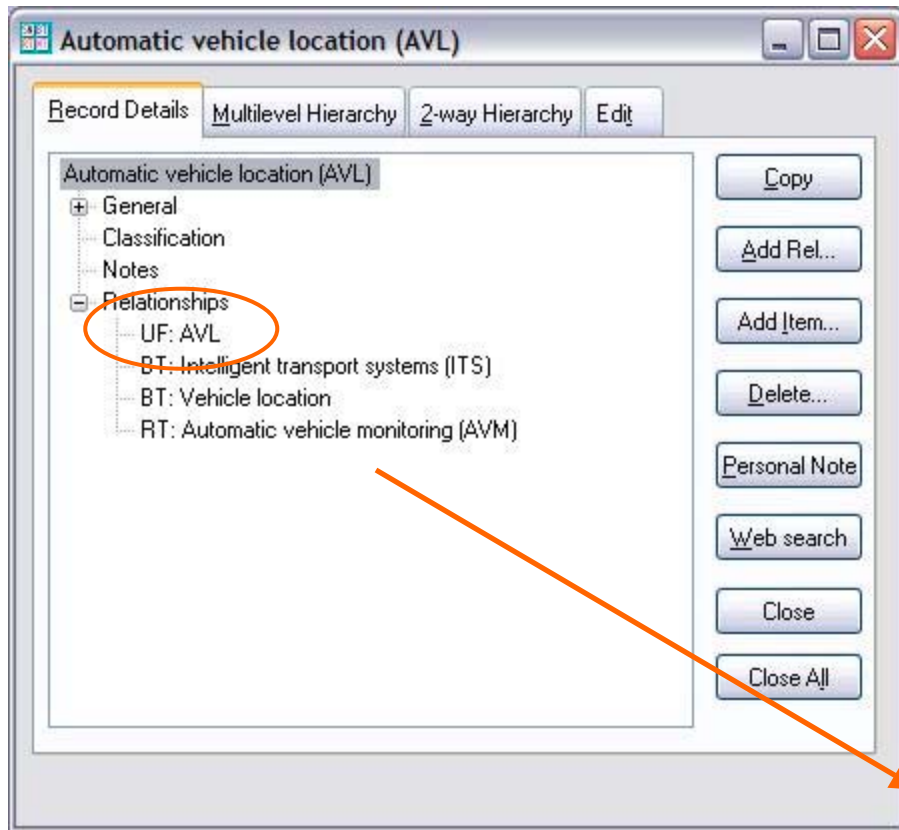
Save Close

Add a "standard" relationship (or you can define your own - e.g. "Allied Term")

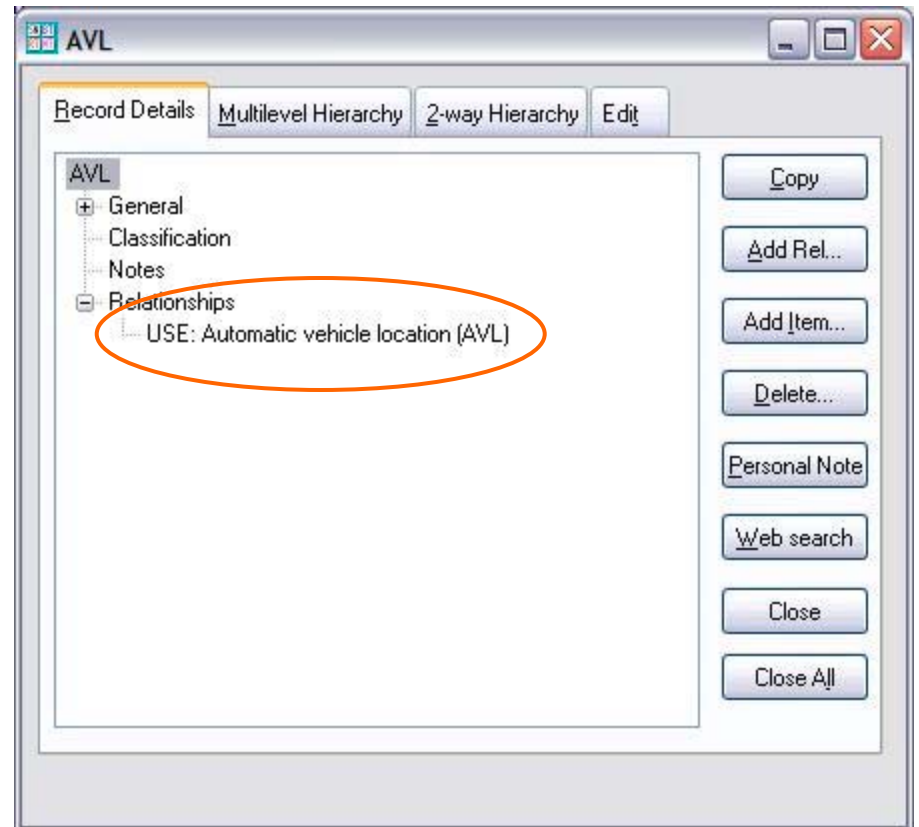


You can import an entire thesaurus from a text file (left) or you can type entries into MultiTes 2005 Pro using the **Quick data entry** dialogue (below)





For every relationship you create, MultiTes 2005 Pro automatically creates the inverse relationship



Term	Relationships	Notes	Categories
Articulated lorry	USE	-	-
Articulated vehicle	BT, NT, RT, UF	-	-
Asbestos	RT	-	-
Ash			
Asphalt			
Asphalt cement			
Asphalt pavement			
Asphaltene			
Asphaltic concrete			
Asset management			
Association			
Asymmetry			
Atlas			
Atmosphere			
Atmospheric pollution			
ATT			
Attack			
Attention			
Attitude			
Attrition			
Audit			
Aural signal			
Australian design rules			
Australian government			
Australian standard			
Automatic data processing			
Automatic fare collection	BT, RT	-	-
Automatic incident detection	BT	-	-
Automatic toll collection	BT, RT	-	-

**Automatic toll collection**

Record Details Multilevel Hierarchy 2-way Hierarchy Edit

Automatic toll collection

- General
  - Classification
  - Notes
- Relationships
  - BT: Intelligent transport systems (ITS)
  - BT: Toll collection
  - RT: Automatic fare collection
  - RT: Automatic vehicle identification (AVI)
  - RT: Toll road

Copy

Add Rel...

Add Item...

Delete...

Personal Note

Web search

Search in Google

Search in Yahoo

Feedback

Close All

Click the **Web search** button to search for your term on the web (the options are fully customisable)

Term	Relationships	Notes	Categories
Attitude	NT, RT, UF	-	-
Attrition	USE	-	-
Audit	NT, RT	-	-
Aural signal	RT, UF	-	-
Australian design rules	BT, RT	-	-
Australian government	USE	-	-
Australian standard	RT	-	-
Automatic data processing	USE	-	-
Automatic fare collection	BT, RT	-	-
Automatic incident detection	BT	-	-
Automatic toll collection	BT, RT	-	-
Automatic vehicle identification (AVI)	BT, RT, UF	-	-
Automatic vehicle location (AVL)	BT, RT, UF	-	-
Automatic vehicle monitoring (AVM)	BT, RT, UF	-	-
Automation	RT, UF	-	-
Automobile	USE	-	-
Automobile demand	USE	-	-
Automotive guidance	USE	-	-
Average speed	BT	-	-
AVI	USE	-	-
AVL	USE	-	-
AVM	USE	-	-
Axle	BT, RT	-	-
Axle load	BT, RT, UF	-	-
B double	BT	-	-
Baby	USE	-	-
BAC	USE	-	-
Back analysis	RT	-	-
Back calculation	RT	-	-

Use the quick search feature to locate a term...

MultiTes 2005 Pro - C:\mt2005\data\ATRI2005.th2

File Edit Define Term Reports Window Help

Search term attitude Go Advanced New term Display Flag Add rels.

Term	Relationships	Notes	Categories
Attitude	NT, RT, UF	-	-
Attrition	USE	-	-
Audit	NT, RT	-	-
Aural signal	RT, UF	-	-
Australian design rules	BT, RT	-	-
Australian government	USE	-	-
Australian standard	RT	-	-
Automatic data processing	USE	-	-
Automatic fare collection	BT,	-	-
Automatic incident detection	BT	-	-
Automatic toll collection	BT,	-	-
Automatic vehicle identification (AVI)	BT,	-	-
Automatic vehicle location (AVL)	BT,	-	-
Automatic vehicle monitoring (AVM)	BT,	-	-
Automation	RT,	-	-
Automobile	USE	-	-
Automobile demand	USE	-	-
Automotive guidance	USE	-	-
Average speed	BT	-	-
AVI	USE	-	-
AVL	USE	-	-
AVM	USE	-	-
Axle	BT, RT	-	-
Axle load	BT, RT, UF	-	-
B double	BT	-	-
Baby	USE	-	-
BAC	USE	-	-
Back analysis	RT	-	-
Back calculation	RT	-	-

**Advanced search**

Find terms which: contain text... fatigue Go!

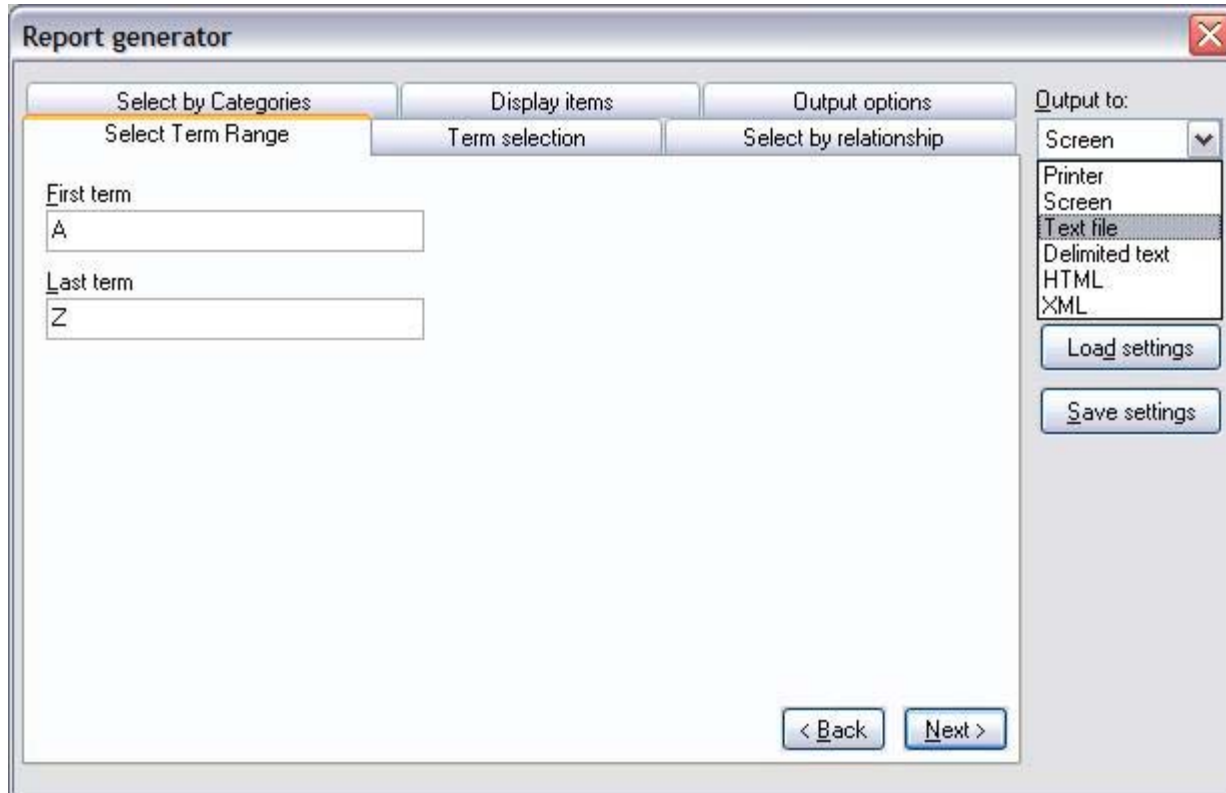
Terms that: start with...  
 contain text...  
 are flagged as...  
 belong in category...  
 have a note with text...  
 status is...  
 type is...  
 term number is...

Display record  
 +New term  
 Close

**Terms that match your criteria**

Driver fatigue  
 Fatigue  
 Human fatigue  
 Material fatigue

...or use the advanced search feature for more precise searching



Use the **Report generator** to create outputs in a number of very useful formats

MultiTes 2005 Pro - C:\mt2005\data\ATRI2005.th2

File Edit Define Term Reports Window Help

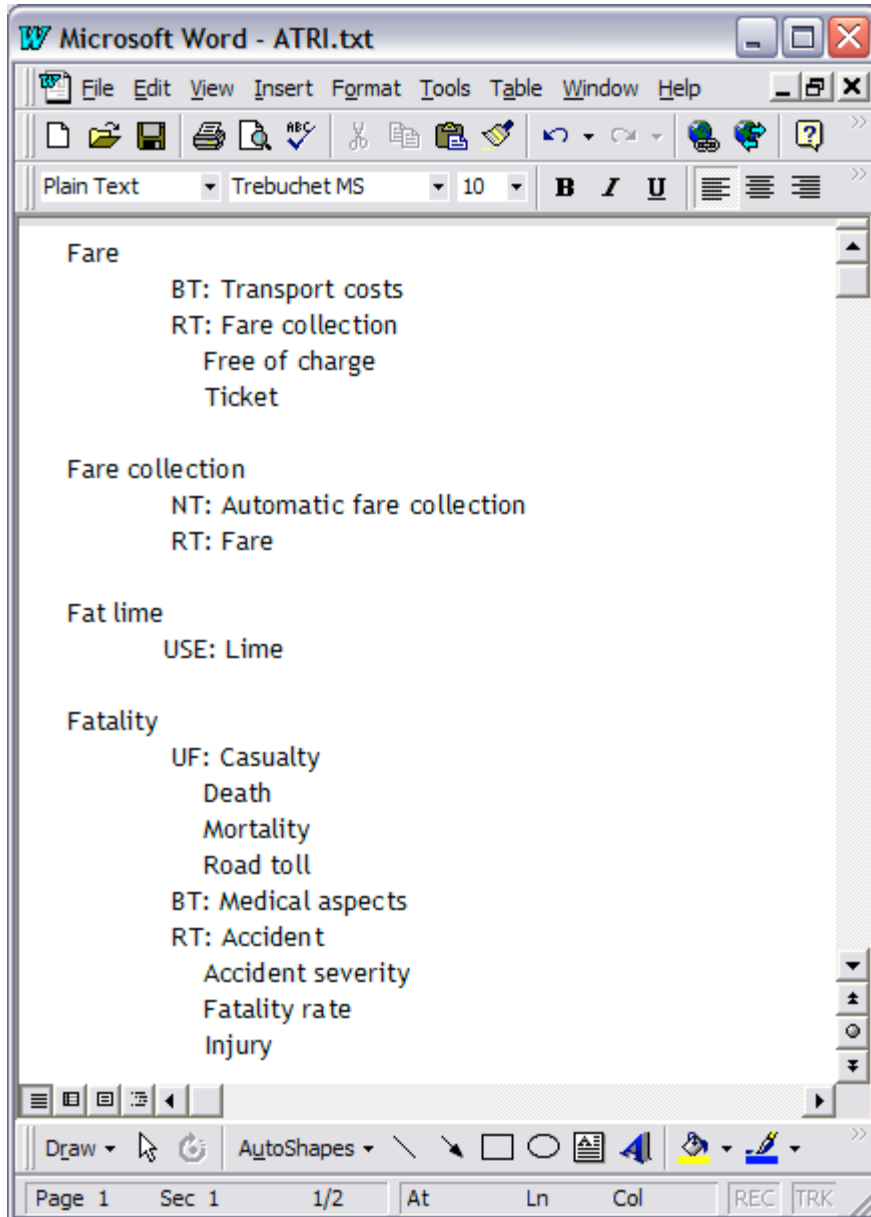
Search term: attitude

Advanced New term Display Flag Add rels.

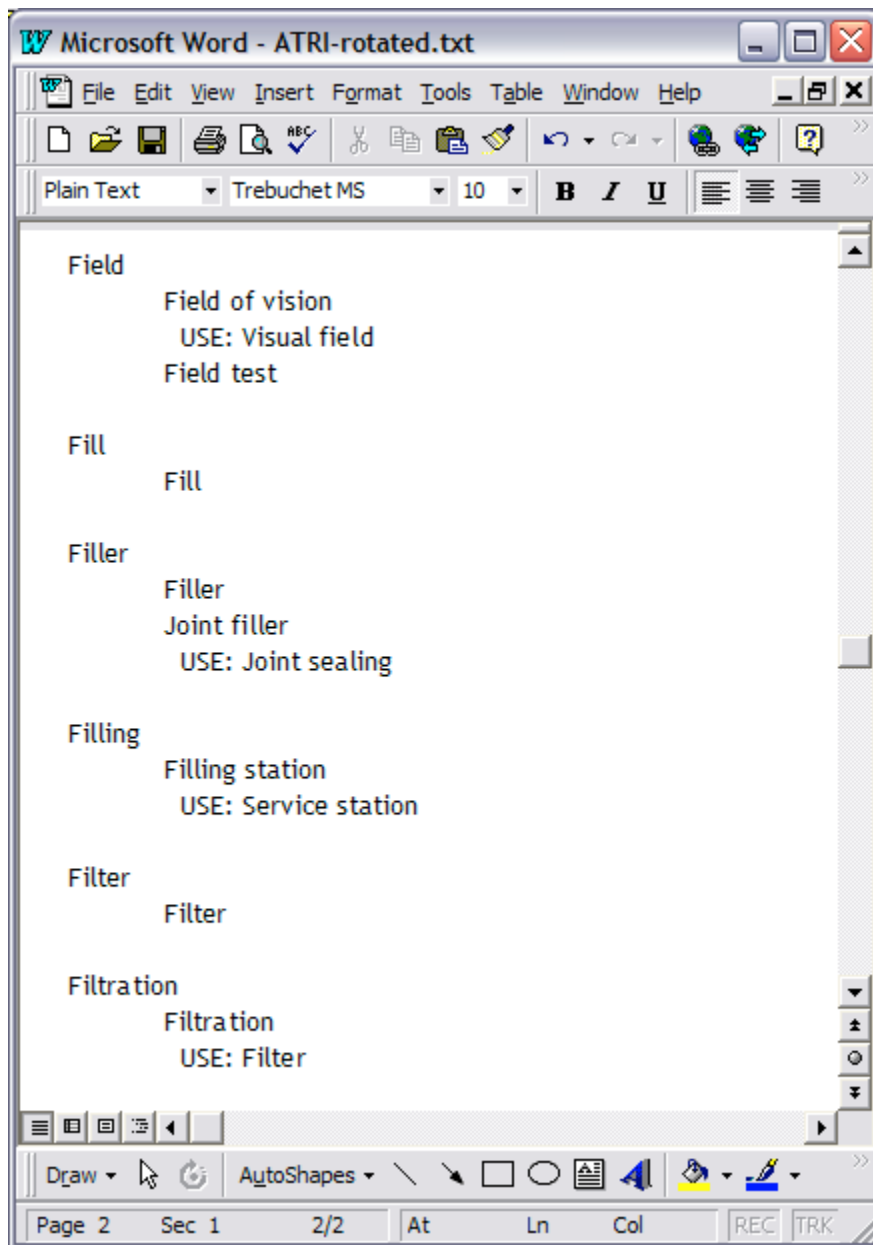
Report generator  
 Alphabetical  
 Top term  
 Hierarchical  
 Subject categories  
 Classified  
 Rotated index

Term	Relationships	Notes	Categories
Attitude	NT, RT, UF	-	-
Attrition	USE	-	-
Audit	NT, RT	-	-
Aural signal	RT, UF	-	-
Australian design rules	BT, RT	-	-
Australian government	USE	-	-
Australian standard	RT	-	-
Automatic data processing	USE	-	-
Automatic fare collection	BT, RT	-	-
Automatic incident detection	BT	-	-
Automatic toll collection	BT, RT	-	-
Automatic vehicle identification (AVI)	BT, RT, UF	-	-
Automatic vehicle location (AVL)	BT, RT, UF	-	-
Automatic vehicle monitoring (AVM)	BT, RT, UF	-	-
Automation	RT, UF	-	-
Automobile	USE	-	-
Automobile demand	USE	-	-
Automotive guidance	USE	-	-
Average speed	BT	-	-
AVI	USE	-	-
AVL	USE	-	-
AVM	USE	-	-
Axle	BT, RT	-	-
Axle load	BT, RT, UF	-	-
B double	BT	-	-
Baby	USE	-	-
BAC	USE	-	-
Back analysis	RT	-	-
Back calculation	RT	-	-

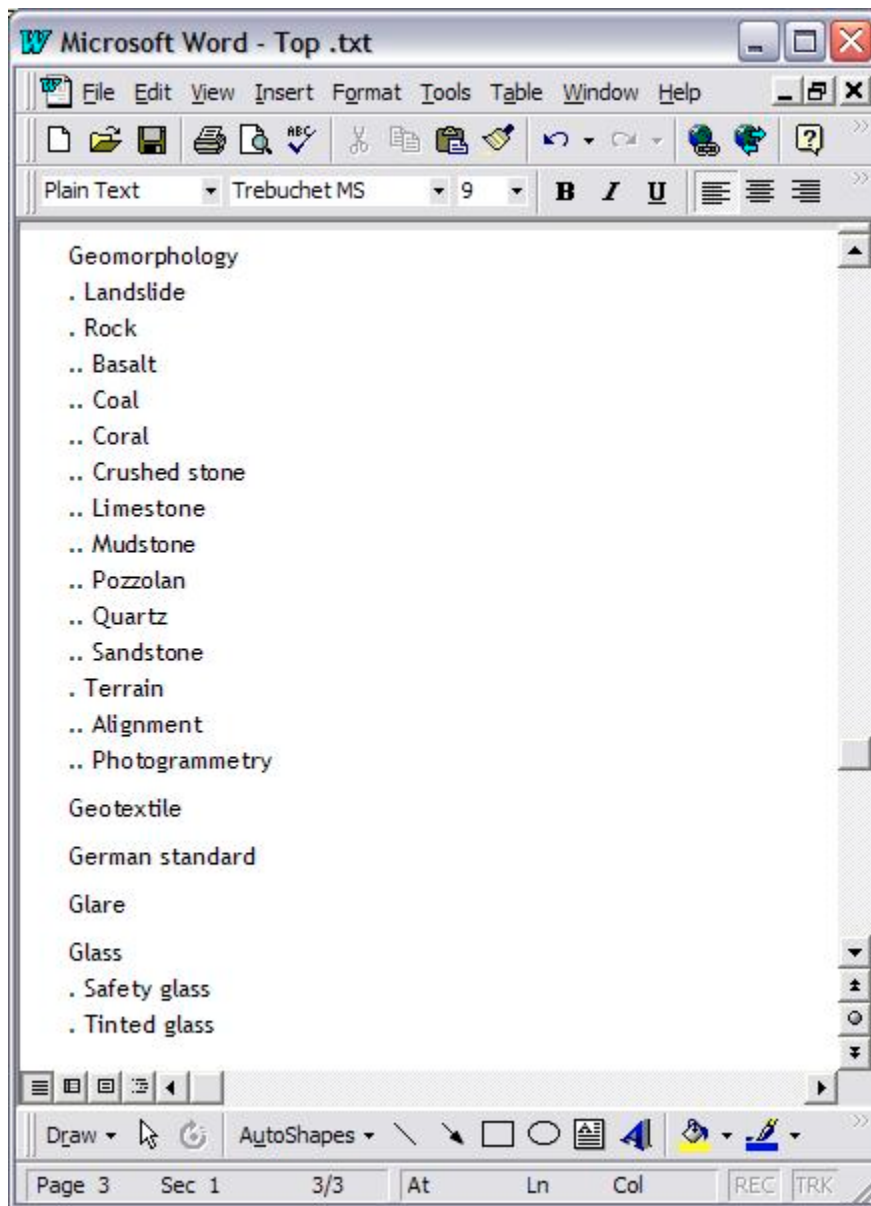
A number of other standard report types are built-in



Typical MultiTes 2005 Pro  
report in alphabetical  
format



Typical MultiTes 2005 Pro  
“rotated index” report



Typical MultiTes 2005 Pro  
“top term” report

## Other important features of MultiTes 2005 Pro include:

- Number of terms and relationships limited only by your computer configuration
- Unlimited number of hierarchies per thesaurus
- Unlimited number of relationships for each term
- Support for ANSI/NISO standard relationships
- Support for user-defined relationships and comment fields
- Validation of conflicting relationships
- Support for both monolingual and multilingual thesauri
- Support for foreign characters (diacritical marks)
- Support for multiple users (LAN)
- Output to HTML to create a web site of your thesaurus, ready for publishing on the Internet

# MultiTes 2005 Web Deployment Kit

Dynamic publishing of MultiTes  
thesauri to the web

MAXUS

# Search the Thesaurus for the Australian Transport Index

New  
search

## SEARCH CRITERIA

Enter term or text to search:

## SEARCH OPTIONS

Select a search method:  ▼

Select display contents:  ▼

Number of Terms to Display:  ▼

Powered by MultiTes 2005 WDK

Purchase the new Web Deployment Kit and publish your MultiTes thesaurus dynamically to the web!

# Search the Thesaurus for the Australian Transport Index

[New search](#)

[Unleaded petrol](#)  
[Unregistered vehicle](#)  
[Unreinforced concrete](#)  
[Unsatuated material](#)  
[Unsealed road](#)  
[Unsignalized intersection](#)  
[Upgrading \(road\)](#)  
[Urban area](#)  
[Urban consolidation](#)  
[Urban cycle](#)  
[Urban development](#)  
[Urban form](#)  
[Urban road](#)  
[Urban traffic control \(UTC\)](#)  
[Urban transport](#)  
[Utilities](#)  
[Value of life](#)  
[Value of time](#)  
[Van](#)  
[Van pooling](#)  
[Vandalism](#)  
[Variability](#)  
[Variable message sign](#)  
[Vegetable oil](#)  
[Vegetation](#)

A typical Web Deployment Kit search results screen (fully customisable, of course)

[Next page](#) | [New search](#)

Powered by MultiTes 2005 WDK

# Search the Thesaurus for the Australian Transport Index

New  
search

## Unleaded petrol

| Show hierarchy | Search the Internet: WebPublisher PRO (ATRI) Go!

UF: Lead free petrol  
BT: Fuel  
RT: Lead  
Vehicle emissions

WebPublisher PRO (ATRI)  
Google  
Yahoo!

Use the Web Deployment Kit to find a thesaurus term, then search for that term on the web, including Inmagic<sup>®</sup> *WebPublisher PRO* databases!

# MultiTes 2005 Pro & Web Deployment Kit

Available from  
Maxus Australia Pty Ltd

- sole distributor in Australia  
& New Zealand

# MAXUS